



**Composite Recycling Technology Center**

**2220 West 18<sup>th</sup> St.**



## **Pull Cord Twist**

If you have a red cord that looks like this, here is how to fix it and then prevent it from happening again.



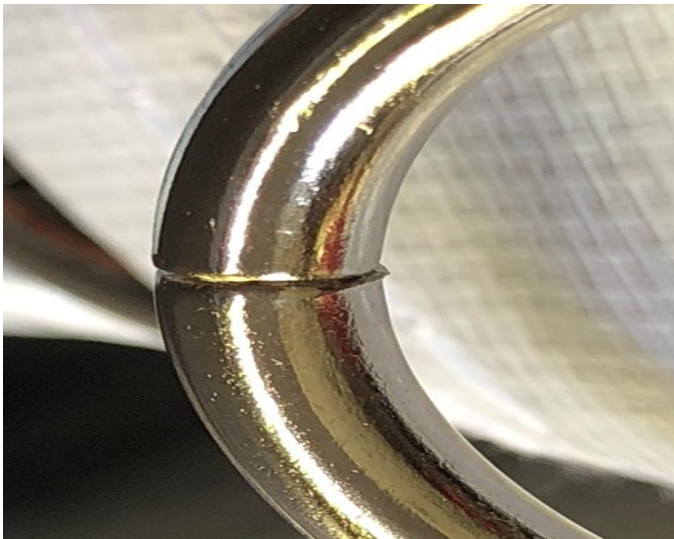
The simplest fix is as follows:

1. Pull up on the red cord and release all the tension out of the bow on both sides of the net.
2. With the red cord slackened, pull the knot end of the cord out of the top cap.
3. Untie the knot at the end of the red cord.
4. Pull the red cord out of the little black tunnel that it goes through at the top of the top cap.
5. Now the cord is free and you can unravel the twist.
6. Once unraveled and you are sure that the top tape is standing straight, bring the red cord from under the metal ring and bring it back around to the top cap (picture 1).
7. Make sure the ring is rotated so that it does not go over the small split in the ring (Pictures 2 and 2).
8. Now feed the cord through the little tunnel that is on the very top of the top cap (picture 3).
9. Tie a knot in the end of the red cord so that it cannot fit back through the tunnel.

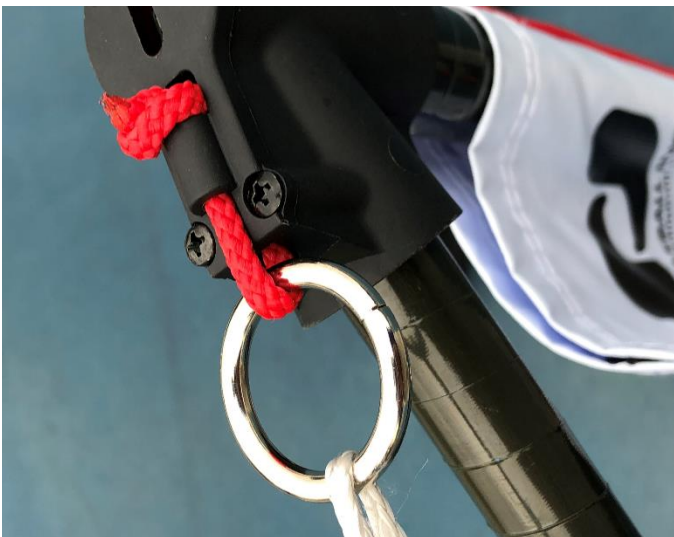
Picture 1



Picture 2



Picture 3



## Prevention:

There is absolutely no doubt that the cord twist is coming from the rolling or unrolling action with the net when it is either being set up or stored. We have tested this thoroughly and have been able to consistently prove it as the source. The red cord loops at some point around the post and that causes the twist. If the cord is slackened all the way and then tucked into the vinyl wrap of the post that says Swift on it like in picture #4 below, it will prevent the issue. We suggest keeping it tucked in there even after you have tensioned the bow for play. It keeps it out of the way so the nob or cord does not get hit with an around the post shot.

Picture 4



Thanks for taking the time to go through this. You are now ready to get back to enjoying the great game of Pickleball with your SwiftNet™.

The CRTC is a 501(c)3 not for profit that is working to do our part to help keep 50 million pounds of carbon fiber scrap from going into landfill globally. We take carbon fiber that would normally go into a Boeing 777X or 787 jetliner, and repurpose it into cool products that we design and sell that help to improve people's lives. In manufacturing these products here in Port Angeles, WA we provide employment to those who need a hand up. Your purchase of the SwiftNet™ helps to keep people employed, so we very much appreciate it. You can learn more about us at [www.CRTC-WA.org](http://www.CRTC-WA.org)

If you ever have the need for spare parts or accessories, they can be found at:

<https://www.compositerecycling.org/aerosportsequiment.html>

Please contact us should you ever have any questions as we are here to serve:

Composite Recycling Technology Center

2220 West 18<sup>th</sup> St

Port Angeles, WA 98363

360-819-1203

**[dwalter@compositerecycling.org](mailto:dwalter@compositerecycling.org)**

